



School spells TROUBLE for Mildred Hubble

THE WORST WITCH SAVES THE DAY



JILL MURPHY



‘A lovely sparkly book’

Observer



‘Hurray for Jill Murphy! Children
will love the antics of Mildred Hubble
and her hopeless tabby cat’

Independent

‘Millions of young readers have
fallen under the spell of
Jill Murphy’s Worst Witch!’

Sunday Express

‘Hugely entertaining with
wonderful illustrations’

LoveReading4Kids

‘You won’t fail to warm to Mildred Hubble!’

BookTrust



Copyrighted Material

Books by Jill Murphy

THE WORST WITCH

THE WORST WITCH STRIKES AGAIN

A BAD SPELL FOR THE WORST WITCH

THE WORST WITCH ALL AT SEA

THE WORST WITCH SAVES THE DAY

THE WORST WITCH TO THE RESCUE

THE WORST WITCH AND THE WISHING STAR

FIRST PRIZE FOR THE WORST WITCH

DEAR HOUND

Copyrighted Material

THE WORST WITCH SAVES THE DAY

Jill Murphy started putting books together (literally with a stapler) when she was six. Her Worst Witch series, the first book of which was published in 1974, is hugely successful. She also created several award-winning picture books for younger children.



Copyrighted Material

PUFFIN BOOKS

UK | USA | Canada | Ireland | Australia
India | New Zealand | South Africa

Puffin Books is part of the Penguin Random House group of companies
whose addresses can be found at global.penguinrandomhouse.com

www.penguin.co.uk
www.puffin.co.uk
www.ladybird.co.uk



Penguin
Random House
UK

First published 2005
This edition published 2023

001

Text and illustrations copyright © Jill Murphy, 2005

The moral right of the author has been asserted

Typeset in Baskerville MT Pro by Perfect Bound Ltd

Printed and bound in Great Britain by Clays Ltd, Elcograf S.p.A.

The authorized representative in the EEA is Penguin Random House Ireland,
Morrison Chambers, 32 Nassau Street, Dublin D02 YH68

A CIP catalogue record for this book is available from the British Library

ISBN: 978-0-241-60795-4

All correspondence to:
Puffin Books, Penguin Random House Children's
One Embassy Gardens, 8 Viaduct Gardens, London SW11 7BW



Penguin Random House is committed to a sustainable future for our business, our readers and our planet. This book is made from Forest Stewardship Council® certified paper.

**THE
WORST
WITCH
SAVES THE DAY**



JILL MURPHY

Copyrighted Material

PUFFIN

Copyrighted Material

This book belongs
to



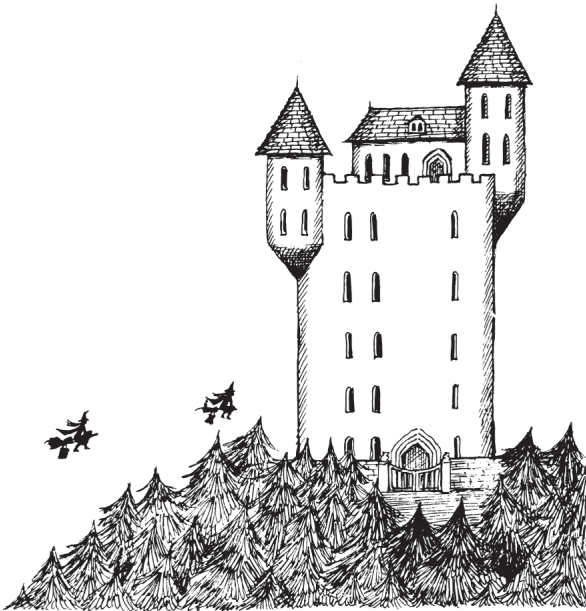
Copyrighted Material

Copyrighted Material

Introduction to Miss Cackle's Academy

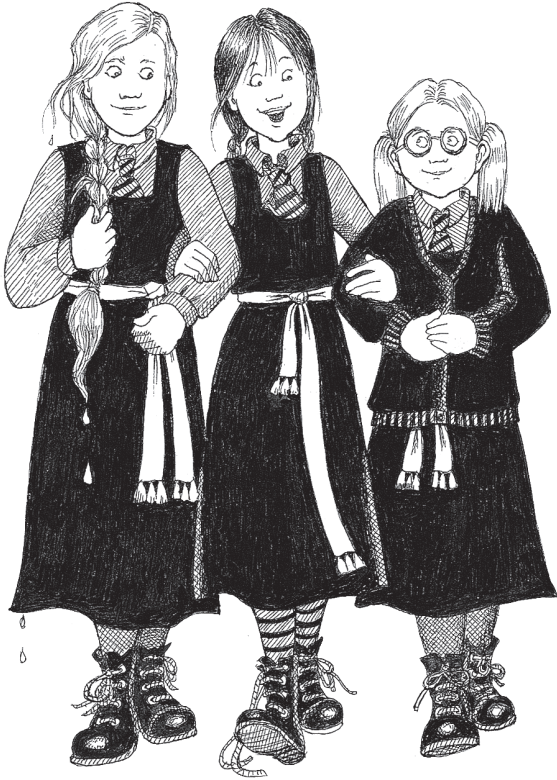
Miss Cackle's Academy for Witches looks more like a prison than a school, with its gloomy grey walls and turrets. Everything about it is dark and wshadowy. Even the girls themselves are dressed in black gymslips, black stockings, black hobnailed boots and grey shirts!

Turn over to meet Mildred Hubble and her friends.



Copyrighted Material

The Pupils



Fun-loving
**Enid
Nightshade**

(not nearly
as placid as
she looks)

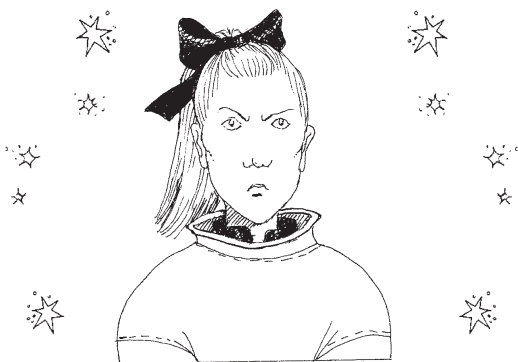
Disaster-prone
**Mildred
Hubble**

(positively the worst
witch at Miss Cackle's
Academy)

Best friend
**Maud
Spellbody**

(kind and loyal)

Copyrighted Material



Snooty know-it-all
Ethel Hallow
(Mildred's arch-enemy)



Ethel's sidekick
Drusilla Paddock
(Meet her in
The Worst Witch All at Sea)

Copyrighted Material

The Teachers



Miss Cackle
the kindly headmistress



Miss Hardbroom
the most terrifying form
mistress in the school



Miss Bat
the chanting mistress



Miss Drill
the gym mistress



Miss Mould
the art mistress
(Meet her in *The Worst Witch to the Rescue*)

Last but not least,
Tabby
Mildred's hopeless cat



Copyrighted Material

Copyrighted Material

CHAPTER ONE



Tropical sunshine beat down on the pupils of Miss Cackle's Academy for Witches as they arrived in the schoolyard on the first day of Winter Term. Only the first-years entered the school on foot, as they had not learnt to fly yet, but all the other pupils, and of course the teachers, soared over the high stone wall on their broomsticks like a flock of crows – a spectacular sight to see. The school year

was divided into two long terms, instead of the usual three, so the weather conditions were often mismatched to the girls' uniforms at the very beginning of term.



‘This is just typical!’ thought Mildred Hubble, wriggling her toes uncomfortably inside thick grey socks and heavy winter boots. ‘When we came back for Summer Term it was snowing and we were all frozen to death in our summer dresses!’

Copyrighted Material